

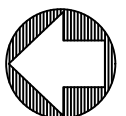
Frost 181-0 Floor 1



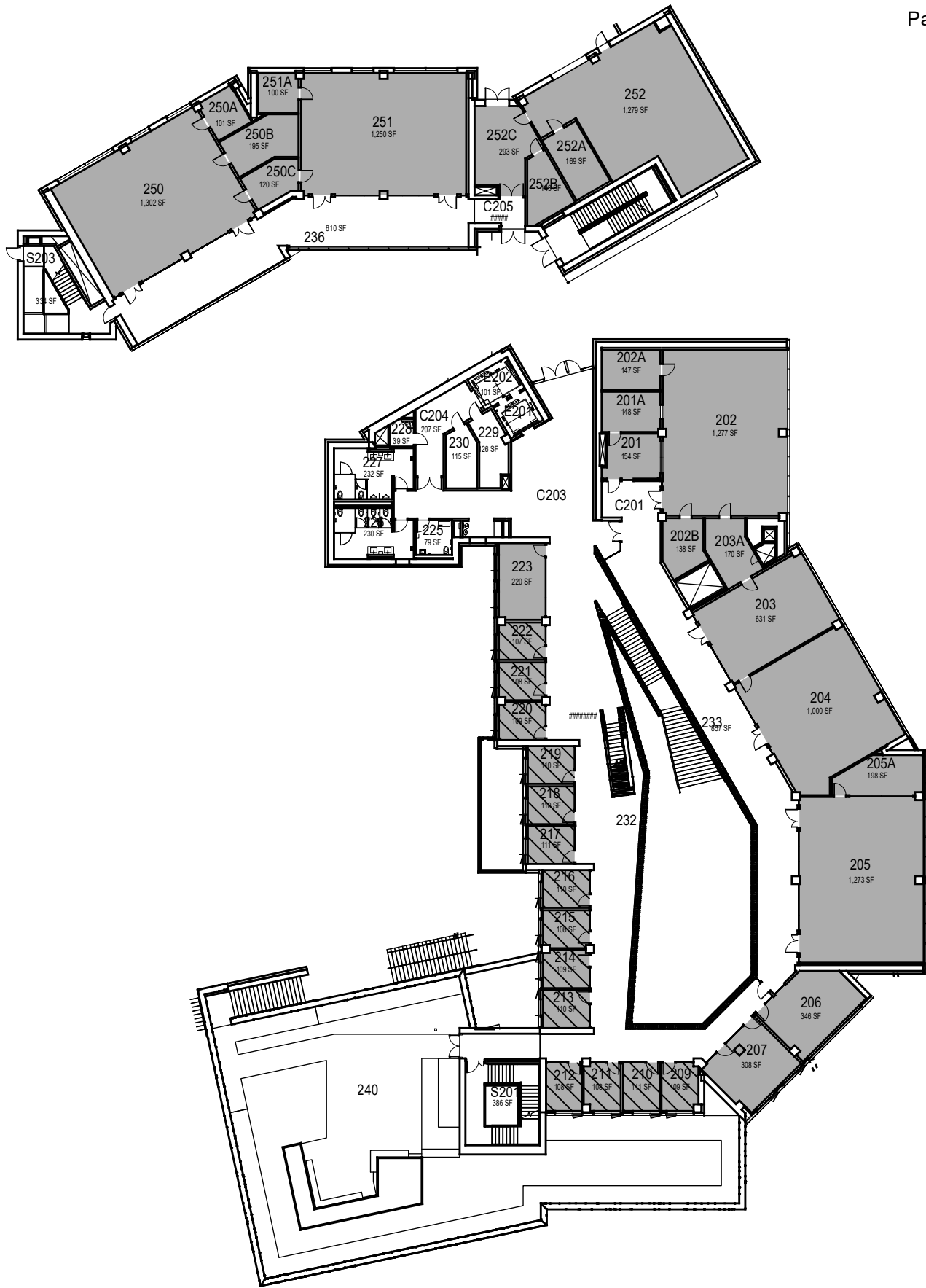
William and Linda Frost Center
for Research and Innovation
Floor 1

| | | |
|--------------|-------------|-----------------|
| 000 UNASSIGN | 400 STUDY | 800 HEALTH |
| 100 CLASS | 500 SPECIAL | 900 RESIDENTIAL |
| 200 LAB | 600 GENERAL | |
| 300 OFFICE | 700 SUPPORT | |

April 2023



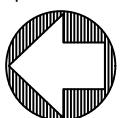
1"=35'



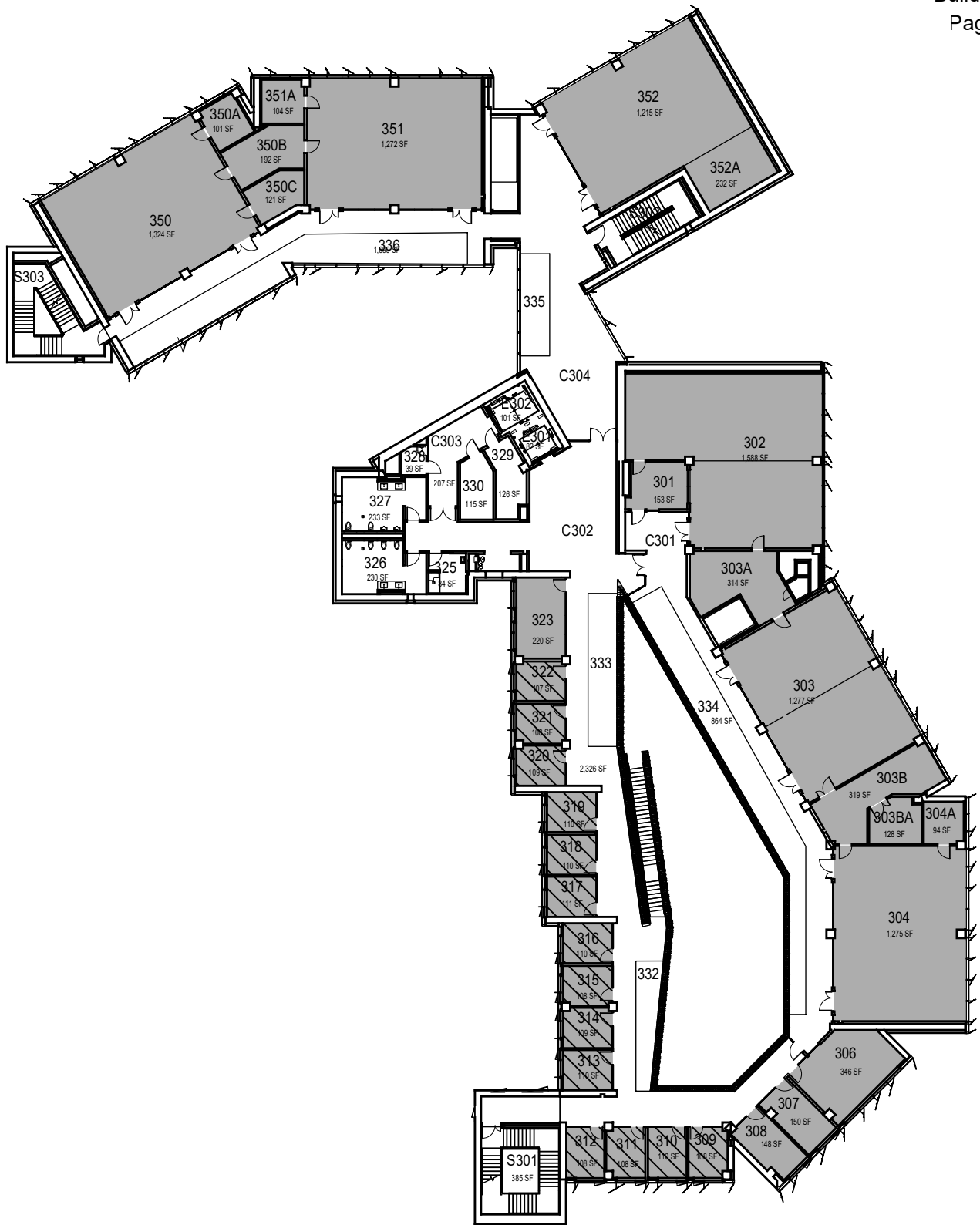
William and Linda Frost Center
for Research and Innovation
Floor 2

| | | |
|--------------|-------------|-----------------|
| 000 UNASSIGN | 400 STUDY | 800 HEALTH |
| 100 CLASS | 500 SPECIAL | 900 RESIDENTIAL |
| 200 LAB | 600 GENERAL | |
| 300 OFFICE | 700 SUPPORT | |

April 2023



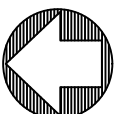
1"=35'



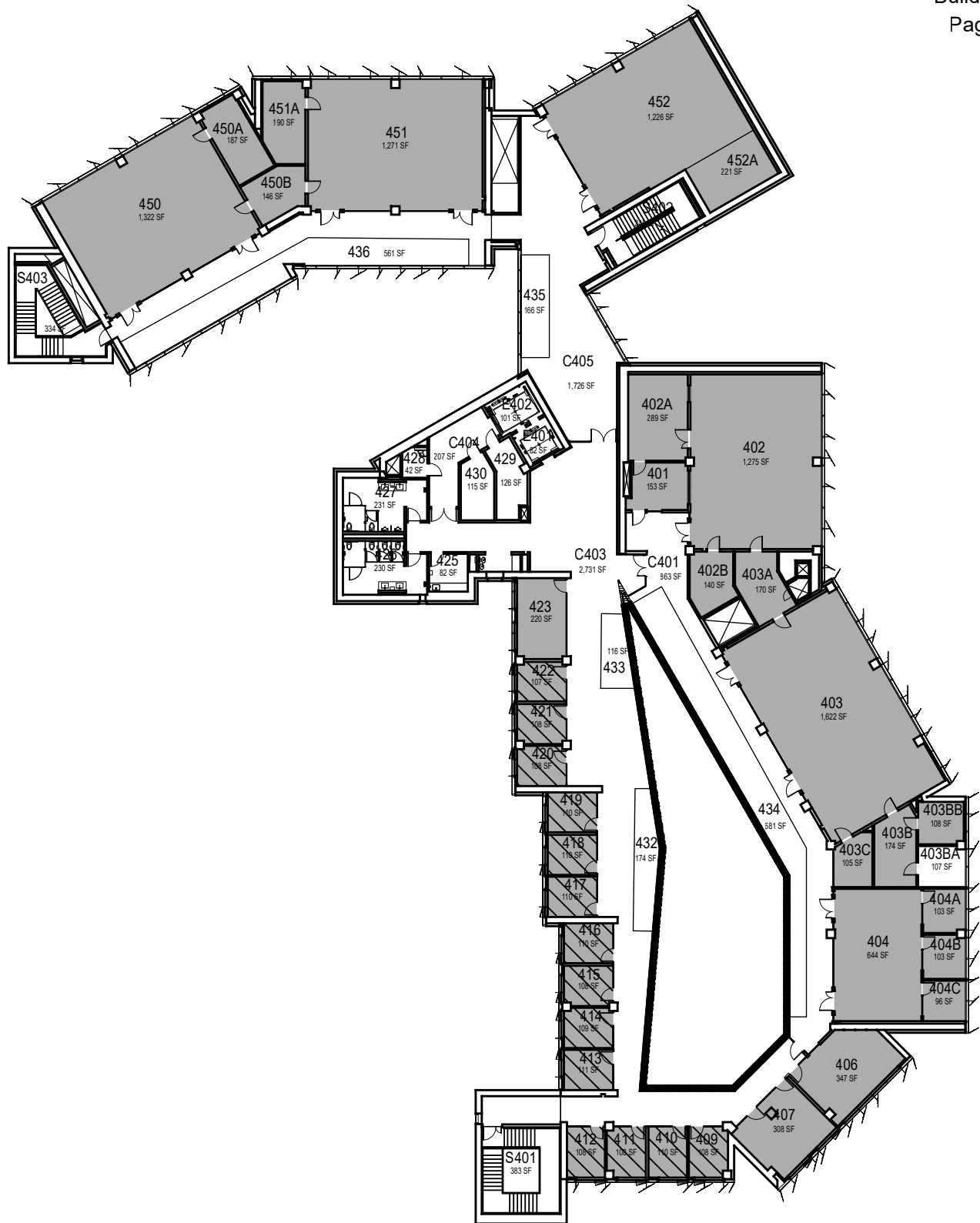
William and Linda Frost Center
for Research and Innovation
Floor 3

| | | |
|--------------|-------------|-----------------|
| 000 UNASSIGN | 400 STUDY | 800 HEALTH |
| 100 CLASS | 500 SPECIAL | 900 RESIDENTIAL |
| 200 LAB | 600 GENERAL | |
| 300 OFFICE | 700 SUPPORT | |

April 2023



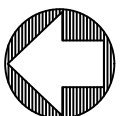
1"=35'



William and Linda Frost Center
for Research and Innovation
Floor 4

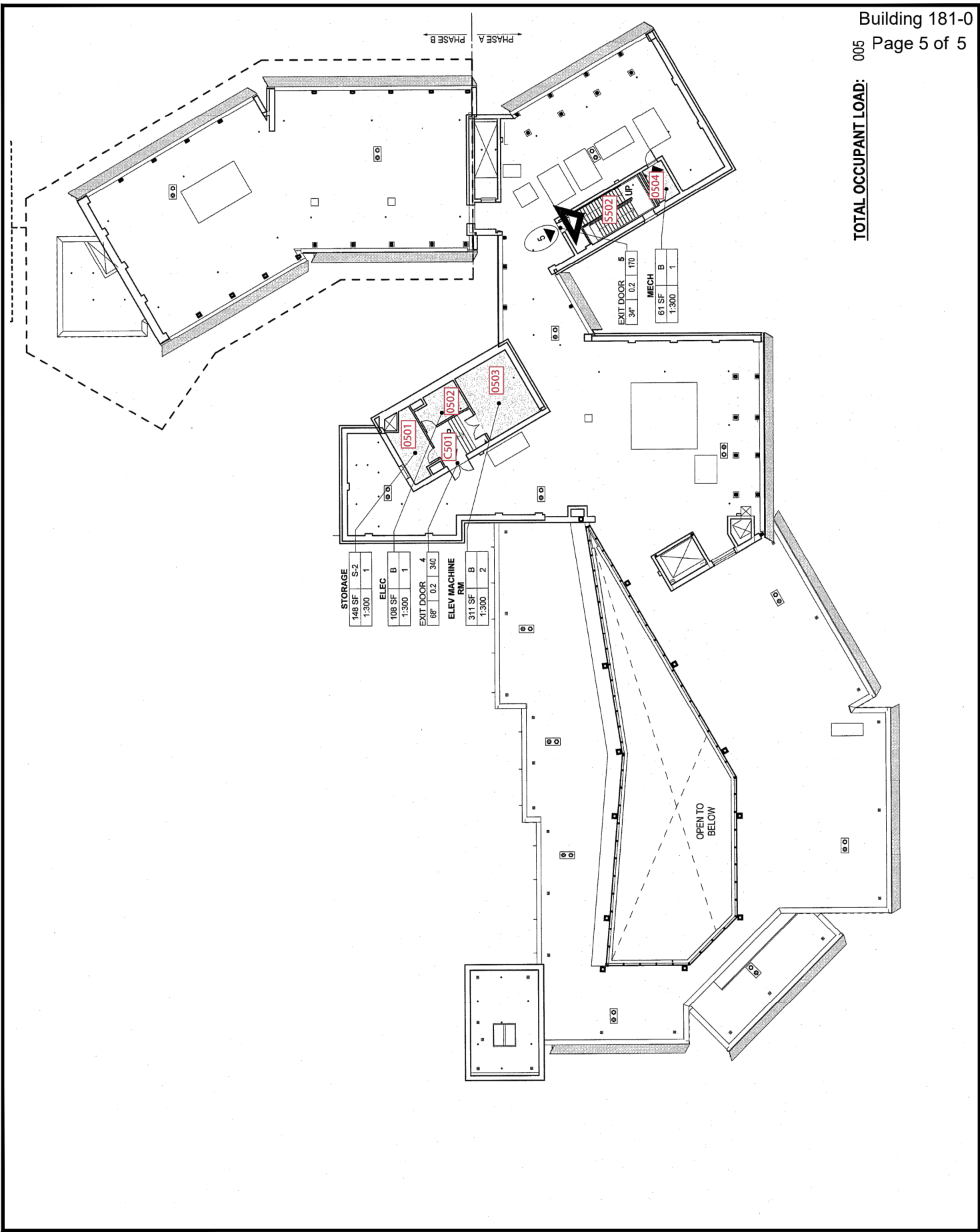
| | | |
|--------------|-------------|-----------------|
| 000 UNASSIGN | 400 STUDY | 800 HEALTH |
| 100 CLASS | 500 SPECIAL | 900 RESIDENTIAL |
| 200 LAB | 600 GENERAL | |
| 300 OFFICE | 700 SUPPORT | |

April 2023



1"=35'

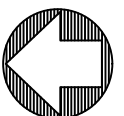
TOTAL OCCUPANT LOAD: 005



William and Linda Frost Center
for Research and Innovation
Floor 5

| | | |
|--------------|-------------|-----------------|
| 000 UNASSIGN | 400 STUDY | 800 HEALTH |
| 100 CLASS | 500 SPECIAL | 900 RESIDENTIAL |
| 200 LAB | 600 GENERAL | |
| 300 OFFICE | 700 SUPPORT | |

April 2023



1"=35'